

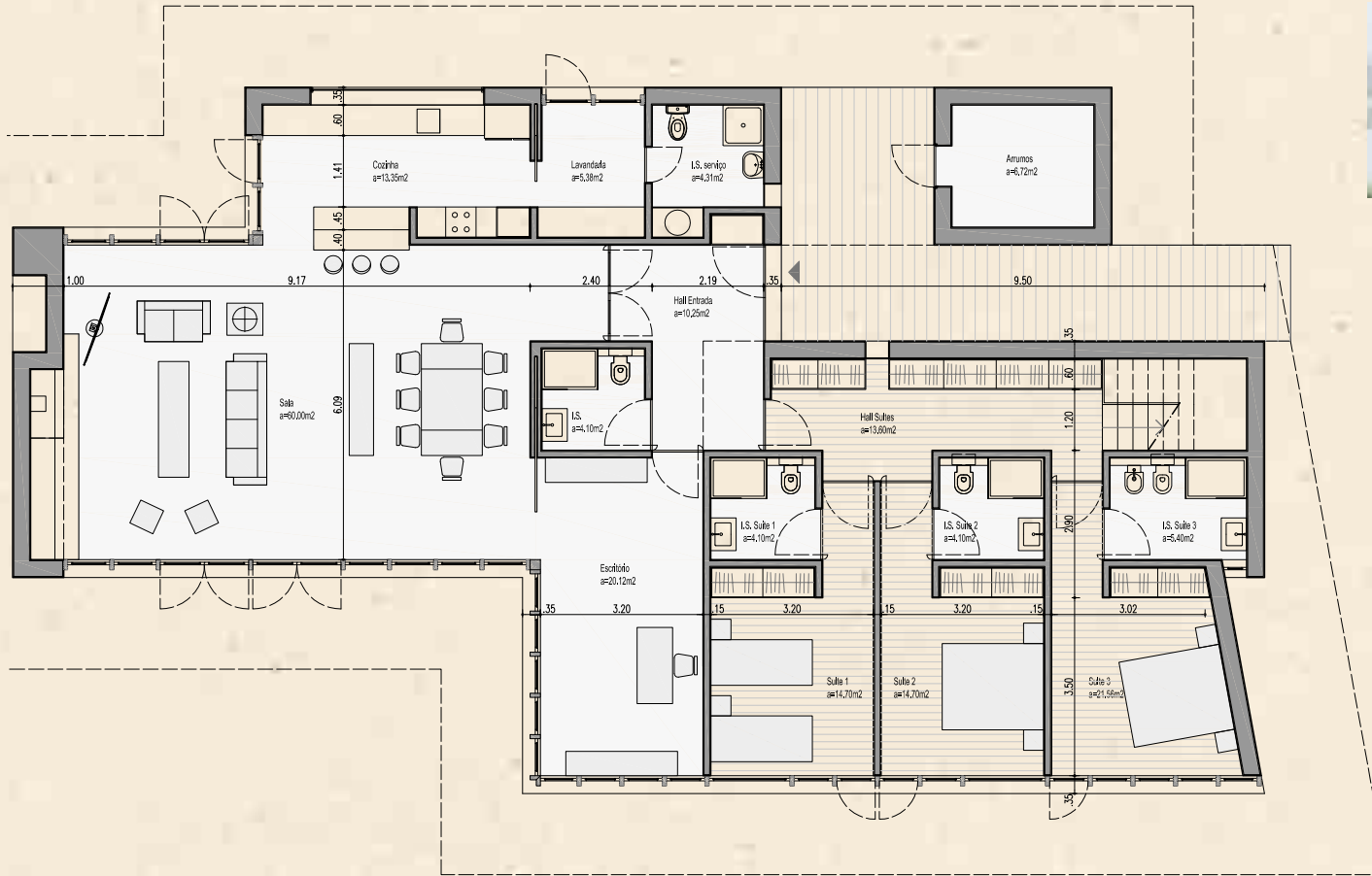


## THE CONCEPT

Our idea was to subtly blend the buildings with the land, by bringing the ground level of the house as close as possible to its natural topography. The entrance to the house is located on the façade which is next to Rúa de Serventia, the social area and the outer leisure area remaining on the opposite side of the house thus guaranteeing that its occupants have their privacy. The outer space adjacent to the house is covered with a wooden deck connecting it to the swimming pool, thus creating a leisure area with both shade and sun.

The flat roof creates a balance in relation to the walls and outer windows thus allowing for a better integration in the surrounding landscape, stressing the horizontality of the building.

The internal layout of the house and the dimension of the windows guarantees that all rooms will always have a clear view of the surrounding landscape. This relationship with the land allows for an interpenetration of the indoor / outdoor space, suggesting a continuation of the indoor space onto the landscape.



## FINISHINGS

- Living room floor: 'Sand coloured epoxy resin
- Bedroom Floor: Riga wood flooring
- Outdoor deck: Profix Lunawood AntiSlip boards
- Swimming pool: Inner lining in 24 x 24 mm black mosaic. Overflow type filtering system

## Pestana Tróia

ECO-RESORT & RESIDENCES  
PORTUGAL

[www.pestanatroia.com](http://www.pestanatroia.com)

### GONALO SALAZAR DE SOUSA - ARQUITECTOS

Architects atelier founded in Lisbon, 1993.

Gonalo Salazar de Sousa - Arquitectos has been responsible for Architectural Projects in a number of areas, from Office and Commercial Areas to Tourist Developments, Renovation, Villas and Residential Buildings of various types.

The work undertaken by Gonalo Salazar de Sousa - Arquitectos is characterised by their commitment to seeking the best special concept and emphasising the functionality of the projects. Through our creativity and the care taken during the drawing phases, we strive to produce the highest quality solutions to the challenges before us.

The improvement on traditional solutions and the development of new and innovative ones are the aims of those who desire long lasting and successful products. Exploring the technologies we have within our reach, making the best use of materials, and working constructive details as part of a whole are all important criteria to be highlighted with the aim of serving Man in his comfort and well-being.

SALES:

PORTA **D**A FRENTE  
AMI 6335 • APEMI 567

+ vendas + arrendamentos  
**CASTELHANA**  
AMI 3497

EXCLUSIVE AFFILIATE OF  
**CHRISTIE'S**  
INTERNATIONAL REAL ESTATE

**SALES OFFICE:**

TEL: **+351 265 493 016** | **+351 934 409 283**

[pestana.troia@pestana.com](mailto:pestana.troia@pestana.com)



## THE CONCEPT

- Our architectural language is very simple and clear and allows for the surrounding nature to stand out. It makes a clear difference between a holiday home and a conventional urban home.
- The living room is the area which dominates the space and the patio is mainly covered in vegetation thus truly merging indoor and outdoor areas.
- The house is raised from the land and surrounded by a wide wooden deck. The interior-exterior relation is also guaranteed by way of the long panels of glass resulting in an almost total absence of walls in the social area.

## FINISHINGS

- Living room: Paving in mechanically sanded concrete with microconcrete surface hardener, with a continuous sealant or paving of artificial stone.
- Suites: Paving in mechanically sanded concrete with microconcrete surface hardener, with a continuous sealant or paving of artificial stone.
- Outdoor deck: Wooden boards placed on an autoclave treated pinewood structure
- Swimming pool: Waterproof concrete with sealant



## JOÃO DE ALMEIDA

Graduated in architecture at the Higher School of Fine Arts in Lisbon in 1967.

He trained for two years in Basel, Switzerland with the Architect Hermann Baur and in Trier, Germany with Professor Fritz Thoma, authors of numerous Sacred Architecture projects.

He trained for two years in Barcelona, Spain with the Architect Ribas Piera, full professor in Urban Development at the Faculty of Architecture.

Founder of the Religious Art Renovation Movement – 1951/67.

In 1983 he founded the firm Arqui III which in 1999 came to be known as João de Almeida - Pedro Ferreira Pinto, Arquitectos e Associados – Planning Architecture, Interior Architecture and Design.

## PEDRO FERREIRA PINTO

Graduated in Architecture by the Higher School of Fine Arts in Porto in 1968.

Collaborated in Architect João Andersen's atelier (Porto), and in Architect Henrique Mindlin's atelier – Brazil.

In 1975 in Brazil he founded, together with other partners, the Gabinete de Planeamento, Arquitectura Construção e Turismo.

In 1980 he founded his office Urbanismo e Arquitectura, Lda in Rio de Janeiro.

In 1983 he founded the firm Arqui III which in 1999 came to be known as João de Almeida - Pedro Ferreira Pinto, Arquitectos e Associados – Planning Architecture, Interior Architecture and Design.

## AWARDS

1981 – 1<sup>st</sup> Place - Vilamoura / sector V. zona 1 – 40ha / 1500 apartments

1992 - 1<sup>st</sup> Place – Master Plan for the Science and Natural History Museum at the former Colégio dos Nobres

1996 - 1<sup>st</sup> Place – Recuperation Project Convento das Bernardas

1996 - 1<sup>st</sup> Place – Rehabilitation Project – Fábrica da Pólvora – Bracarena

1998 - 1<sup>st</sup> Place – Rehabilitation Project / Reconversion – Convento S. Francisco (E.S.B.A. L.)

2003 - 1<sup>st</sup> Place – Project for the West Wing of the Arts Faculty, Lisbon University

2004 - 1<sup>st</sup> Place – New installations for the Lisbon Newspaper and Magazine Collection – Bairro Alto

Valmor Award 1990 – Residential compound - Residências Príncipe Real – Lisbon.

Valmor Award 1997 (Honourable Mention) – EXPO Administrative Building - Lisbon.

## Pestana Tróia

ECO-RESORT & RESIDENCES  
PORTUGAL

[www.pestanatroia.com](http://www.pestanatroia.com)

SALES:

PORTA DA FRENTE  
AMI 6335 • APEMI 567

EXCLUSIVE AFFILIATE OF  
CHRISTIE'S  
INTERNATIONAL REAL ESTATE

+ vendas + arrendamentos  
CASTELHANA  
AMI 3497

SALES OFFICE:

TEL: +351 265 493 016 | +351 934 409 283

[pestana.troia@pestana.com](mailto:pestana.troia@pestana.com)

# MIGUEL PASSOS DE ALMEIDA - PMC ARQUITECTOS



## DESCRIPTION OF THE PROJECT

Respecting an unquestionably high quality environment, intervening with care and with discretion, establishing strong links between interior and exterior, favouring privacy and guaranteeing different ways to use spaces or enjoy lifestyles were the main objectives we attempted to accomplish in this project.

The fact we did not know from the start who the future users of the house would be led us to develop a versatile solution for its interior organisation which would be easily adjusted to plots of land of different characteristics.

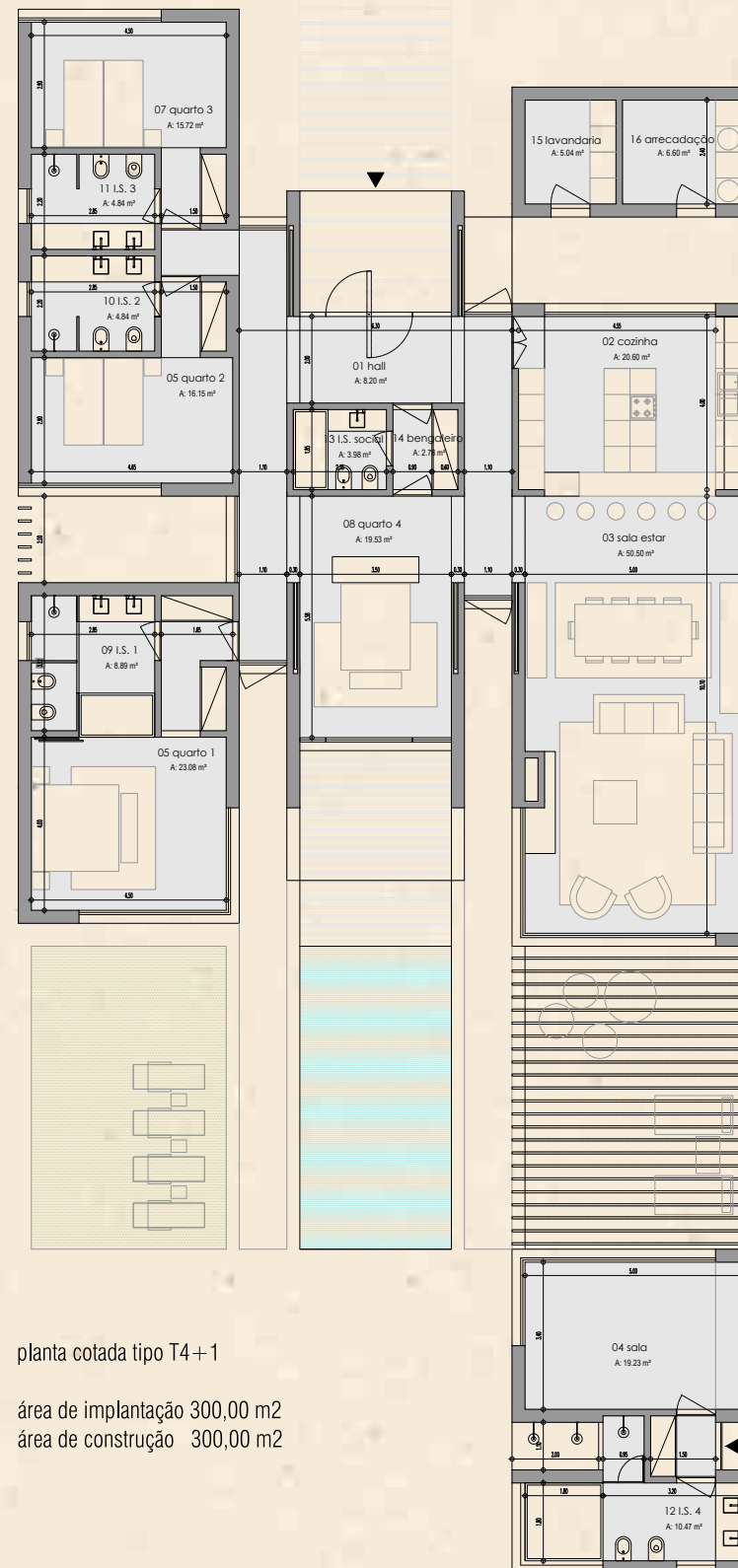
We propose a house with only one floor, organised in three bodies of different dimensions and heights, depending on the typology defined for the plot.

The central body which serves as the pivot to the whole house will include the entrance, the distribution area and an area which can be adjusted to different uses, depending on what the end client wants. A second body will include the social areas, with the kitchen, the dining room and the living room. The third body is where the bedrooms will be placed. They will all be equipped with their own bathrooms.

The outdoor part, designed for some of the plots but with no predetermined function, may be used in different ways and there it will be possible to create an outdoor leisure area.

# FINISHINGS

- Living room floor: Edfan sand coloured microconcrete
- Suite floor: Edfan sand coloured microconcrete
- Outside deck: Natural coloured Lunawood of the Thermowood type



planta cotada tipo T4+1

área de implantação 300,00 m<sup>2</sup>  
área de construção 300,00 m<sup>2</sup>

## MIGUEL PASSOS DE ALMEIDA PMC ARQUITECTOS

PMC | ARQUITECTOS has been responsible for projects in many areas and has been increasing the diversity of its intervention since it was founded.

Housing is one of our main areas of activity, with building rehabilitation projects, single-family housing and residential or tourist developments. In 2006 we received the "Architecture Oscar" in the area of Housing for the "Spazio" project, a set of apartments in Estoril.

We have also been specialising in other areas, such as Services, Urban Development, Environment and Equipment, the latter aspect including projects for Wine Conservation and Producing facilities (wine cellars).

More recently we have established a strategic partnership in the area of health, by taking part in a number of public tenders for hospitals.

## Pestana Tróia

ECO-RESORT & RESIDENCES  
PORTUGAL

[www.pestanatroia.com](http://www.pestanatroia.com)

SALES:

PORTA DA FRENTE  
AMI 6335 • APEMI 567

+ vendas + arrendamentos  
**CASTELHANA**  
AMI 3497

EXCLUSIVE AFFILIATE OF  
**CHRISTIE'S**  
INTERNATIONAL REAL ESTATE

SALES OFFICE:

TEL: **+351 265 493 016** | **+351 934 409 283**

[pestana.troia@pestana.com](mailto:pestana.troia@pestana.com)

# OPENBOOK



## THE CONCEPT

With respect for the natural landscape offered to us in its primitive state, we propose a house adjusted to its existing terrain and vegetation by reducing volume (patios).

These voids lighten the presence of the body on the site by promoting an intrinsic dialogue with the exterior and at the same time recreate an intimate and inward-looking environment for the user.

The programme consists of 4 bedrooms (2 suites), living room, dining room, kitchen and laundry and is distributed in the space by way of the creation of two distinct areas: social/private. These are separated by the central patio which communicates with the entrance to the house, and functions like a joint in articulation with the interior.

The social area attempts to take advantage of the most extensive area and the most withdrawn from the plot of land (with the sea should the plot allow for this) by creating large splashes of glass duly protected from the sun.

The private area lives essentially from the voids (patios) which create order for the volume by controlling the views with neighbouring plots and therefore provide privacy.





## OPENBOOK

OPENBOOK operates at different stages of the real estate process, by covering a full client-support service including architectural and engineering projects, project management, interior and furniture design and property consultancy.

OPENBOOK also guarantees an innovative and integrated service in the creation of architectural, engineering projects, project management and property consultancy, supported by the 20 years of experience of our team.

OPENBOOK relies on its experience with projects in a great variety of countries, notably Portugal, Spain, Morocco, Angola, Mozambique and Brazil.

OPENBOOK has a large portfolio of clients in different areas, housing (multi-family and single-family), services (offices), retail (shops, shopping malls, car stands), health (clinics, hospitals and laboratories), sport (stadiums and health clubs), planning (detail plans and resorts), churches.

Our experience has given us sufficient knowledge to be able to take on any kind of challenge, by guaranteeing modernity and quality in the solutions proposed.

Our state-of-the-art technological capacity should be added to our vast curricular experience, an area we have always invested in from the early days of the firm.

By recognising its technological edge, Autodesk, biggest architecture and specialities software producer in the world has several times invited OPENBOOK to present the company as a Case Study in several countries, having recently considered OPENBOOK as the most advanced office in terms of creative combination of Software and Hardware from among 3 which it chose in Europe and selected it as the beta tester of its products.

In this way clients have access to an additional service allowing them to whenever they want see a virtual 3D view of the solutions to be implemented during the design process.

## FINISHINGS

- Walls: microconcrete / autoclave treated aged Nordic pine
- Paving: microconcrete / autoclave treated aged Nordic pine

## Pestana Tróia

ECO-RESORT & RESIDENCES  
PORTUGAL

[www.pestanatroia.com](http://www.pestanatroia.com)

SALES:

PORTA DA FRENTE  
AMI 6335 • APEMI 567

+ vendas + arrendamentos  
**CASTELHANA**  
AMI 3497

EXCLUSIVE AFFILIATE OF  
**CHRISTIE'S**  
INTERNATIONAL REAL ESTATE

SALES OFFICE:

TEL: **+351 265 493 016** | **+351 934 409 283**

[pestana.troia@pestana.com](mailto:pestana.troia@pestana.com)



# PROMONTÓRIO

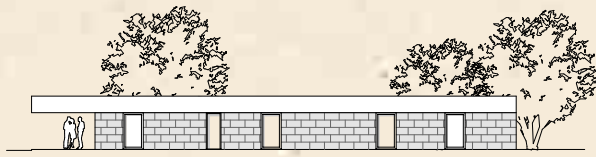


## THE CONCEPT

The concept of the house consists in merging common spaces, diverse but adjacent, thus eliminating corridors and which emerge between the suite modules, with no ruptures or obstructions and in sequence: living room, kitchen, dining room and multimedia room. The outer part, which is in the shape of a box and conjures up the simplicity of building on the sand, consists of continuous walls of stone interrupted by glass doors, ending in a structural element which is both a fascia and a shade on one of the ends where its projection results in an outside porch.

# FINISHINGS

- Wall: Paving in concrete mechanically sanded by helicopter, including supply and application of polypropylene fibres and SIBQUARZO hardener to the white/beige, including markings
- Suites: Paving in concrete mechanically sanded by helicopter, including supply and application of polypropylene fibres and SIBQUARZO hardener to the white/beige, including markings
- Outdoor patio: Paving in apparent concrete waterproofed with a RADCON type system
- Swimming pool: Apparent concrete waterproofed with polyester resin and hardener for the installation of the laminated fibre glass.



## PROMONTÓRIO ARQUITECTOS

Funded in Lisbon in 1990, Promontório is a company that works in the areas of architecture, urban development, landscaping and interior design. Its partners are João Perloiro, João Luís Ferreira, Paulo Perloiro, Paulo Martins Barata and Pedro Appleton. Its main work has been in projects related to housing, tourism and retail.

## Pestana Tróia

ECO-RESORT & RESIDENCES  
PORTUGAL

[www.pestanatroia.com](http://www.pestanatroia.com)

SALES:

PORTA DA FRENTE  
AMI 6335 • APEMI 567

+ vendas + arrendamentos  
**CASTELHANA**  
AMI 3497

EXCLUSIVE AFFILIATE OF  
**CHRISTIE'S**  
INTERNATIONAL REAL ESTATE

SALES OFFICE:

TEL: **+351 265 493 016** | **+351 934 409 283**

[pestana.troia@pestana.com](mailto:pestana.troia@pestana.com)

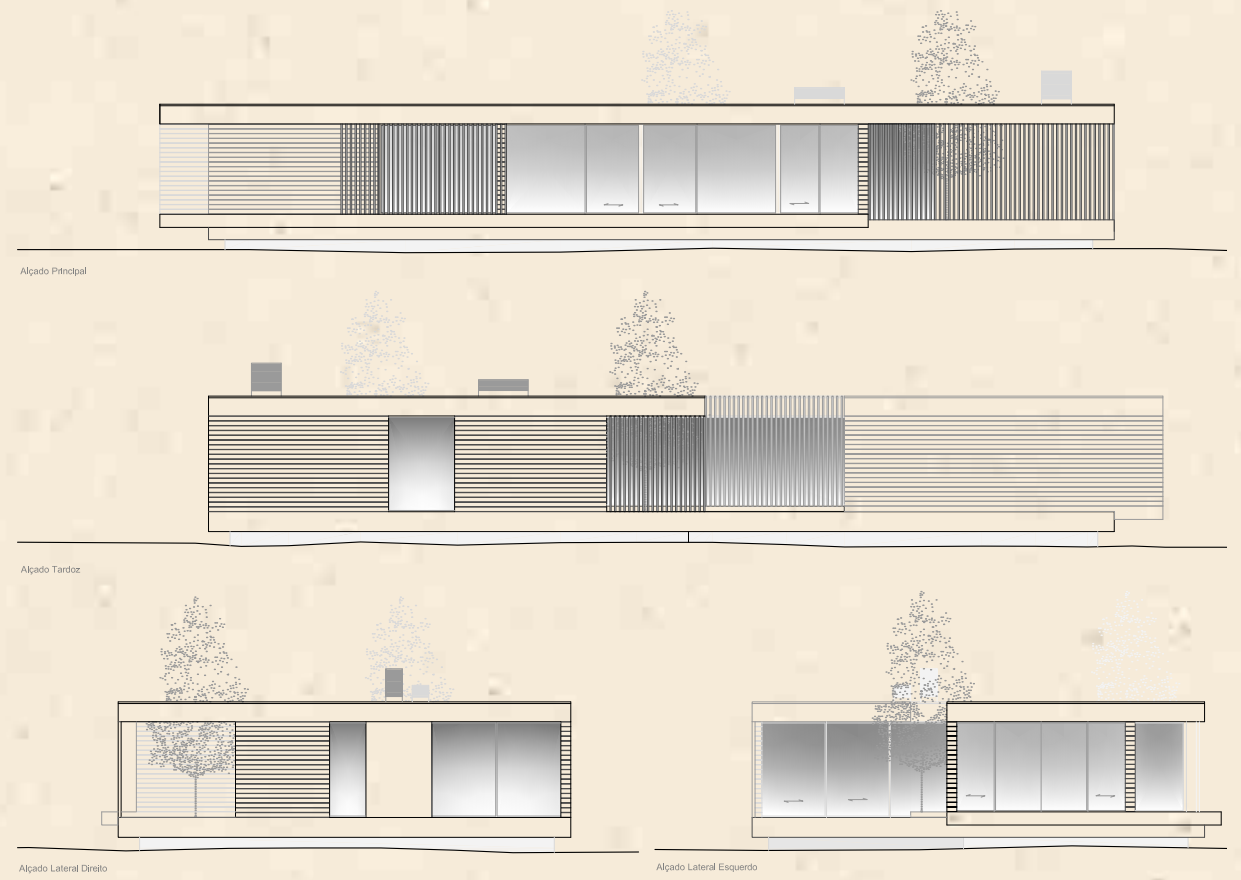


## THE CONCEPT

One assumes that these will be holiday or weekend houses, to be lived in seasonally with the family and friends in order to enjoy the landscape. The aim is to relax and that is the way we want the house to be, informal, part of the landscape with urban usage, offering a fun experience and a quiet intimacy. An escape for the family in a unique, distinct and nearby landscape.

# FINISHINGS

- Living room: White self-levelling element
- Suites: Swood Solid Timboriana Wood
- Outside patio: Untreated Lunawood Deck
- Heating/Cooling: Heated floor



## RRCRS ARQUITECTOS

Formed by Rui Rosa and Carlos Rui Sousa it has been responsible for, among other projects; Urban development of the surroundings of the National Palace of Mafra, Santa Marta Park/Ericeira, Alvalade Cinema, implementation Unit at Alameda das Linhas de Torres, Zambujal church and HB Building/Parque das Nações.

# Pestana Tróia

ECO-RESORT & RESIDENCES  
PORTUGAL

[www.pestanatroia.com](http://www.pestanatroia.com)

SALES:

PORTA **DA** FRENTE  
AMI 6335 • APEMI 567

+ vendas + arrendamentos  
**CASTELHANA**  
AMI 3497

EXCLUSIVE AFFILIATE OF  
**CHRISTIE'S**  
INTERNATIONAL REAL ESTATE

**SALES OFFICE:**

TEL: **+351 265 493 016** | **+351 934 409 283**

[pestana.troia@pestana.com](mailto:pestana.troia@pestana.com)



## THE CONCEPT

The developed concept is based on a full adjustment to the existing morphology and vegetation through a modular construction on platforms. The two typologies, 4 bedrooms+1 and 3 bedrooms+1 are formed by two independent bodies, placed at different levels and articulated by the central entrance constructed in glass. In this way, a separation is created between private and social areas, thus allowing for the creation of more reserved spaces or a greater relation between outdoors and indoors. These spaces prolong the social area of the house with the creation of very wide spans.



ALÇADO A



ALÇADO B

## RRJ ARQUITECTOS

RRJ Arquitectos, founded in 1991 and run by the architect Rui Pinto Gonçalves, is responsible for Architecture and Engineering projects, having right from the onset extended their work to Spain, working together with the VVA atelier in Barcelona.

Throughout its existence, RRJ has worked on projects in such diverse areas as Health, Equipments, Offices, Sport, Commerce, Housing, Recuperation and Urban Development, such as Turcifal Monastery, Head Offices of Infarmed Laboratories, new building of São Francisco Xavier Hospital, Torres Vedras Cultural Centre, new Head Office of the Grupo Mediacapital, restoration and renovation of the Palace of the Lisbon Patriarch, Acqua-Roma Commercial Gallery, block of buildings on the Barcelona Sea Front, Barcelona Traffic Control Centre, Head Office of the City of Lisbon Foundation, o Tourist Resort of Azemmour in Morocco and the 1st classification in the Public Tenders for the Lisboa Oriental Hospital and the new Central Espírito Santo Central Hospital E.P.E. in Évora, both in partnership with the Architect. Eduardo Souto de Moura's atelier.

## FINISHINGS

- Living room: Microconcrete paving or sanded and varnished flooring
- Suites: Microconcrete paving or sanded and varnished flooring.
- Deck: Composite paving
- Windows: Frames in natural coloured-solid wood, with double glazing.  
All spans have mosquito nets



## Pestana Tróia

ECO-RESORT & RESIDENCES  
PORTUGAL

[www.pestanatroia.com](http://www.pestanatroia.com)

SALES:

PORTA DA FRENTE  
AMI 6335 • APEMI 567

EXCLUSIVE AFFILIATE OF  
CHRISTIE'S  
INTERNATIONAL REAL ESTATE

+ vendas + arrendamentos  
**CASTELHANA**  
AMI 3497

**SALES OFFICE:**

TEL: **+351 265 493 016** | **+351 934 409 283**

[pestana.troia@pestana.com](mailto:pestana.troia@pestana.com)